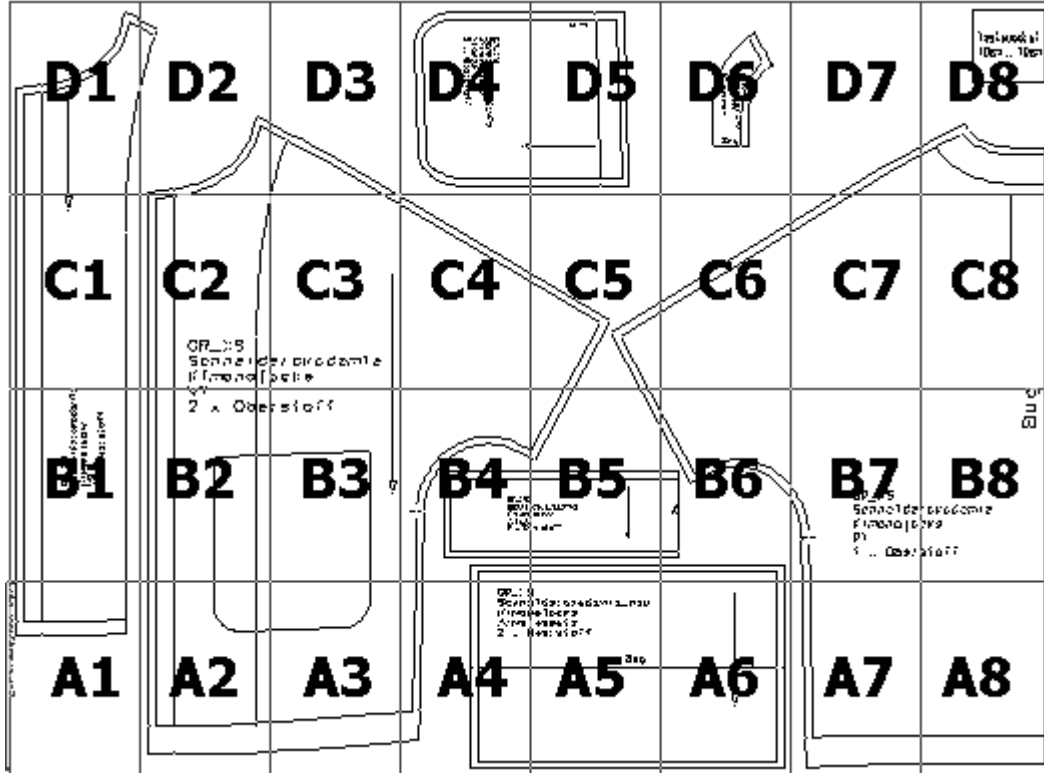
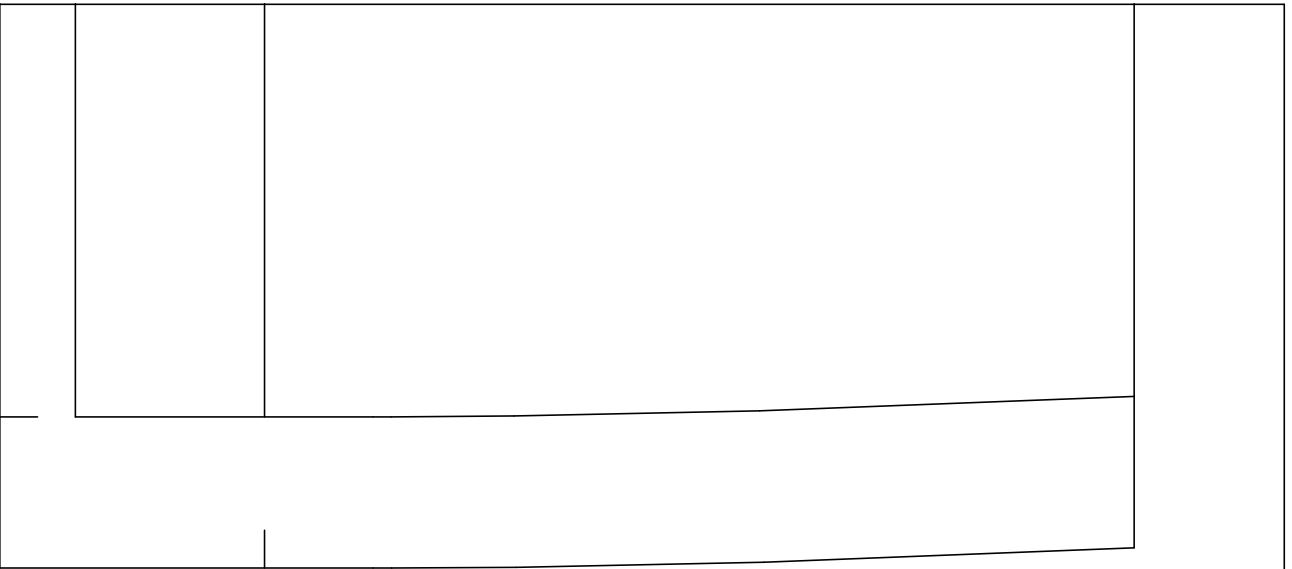


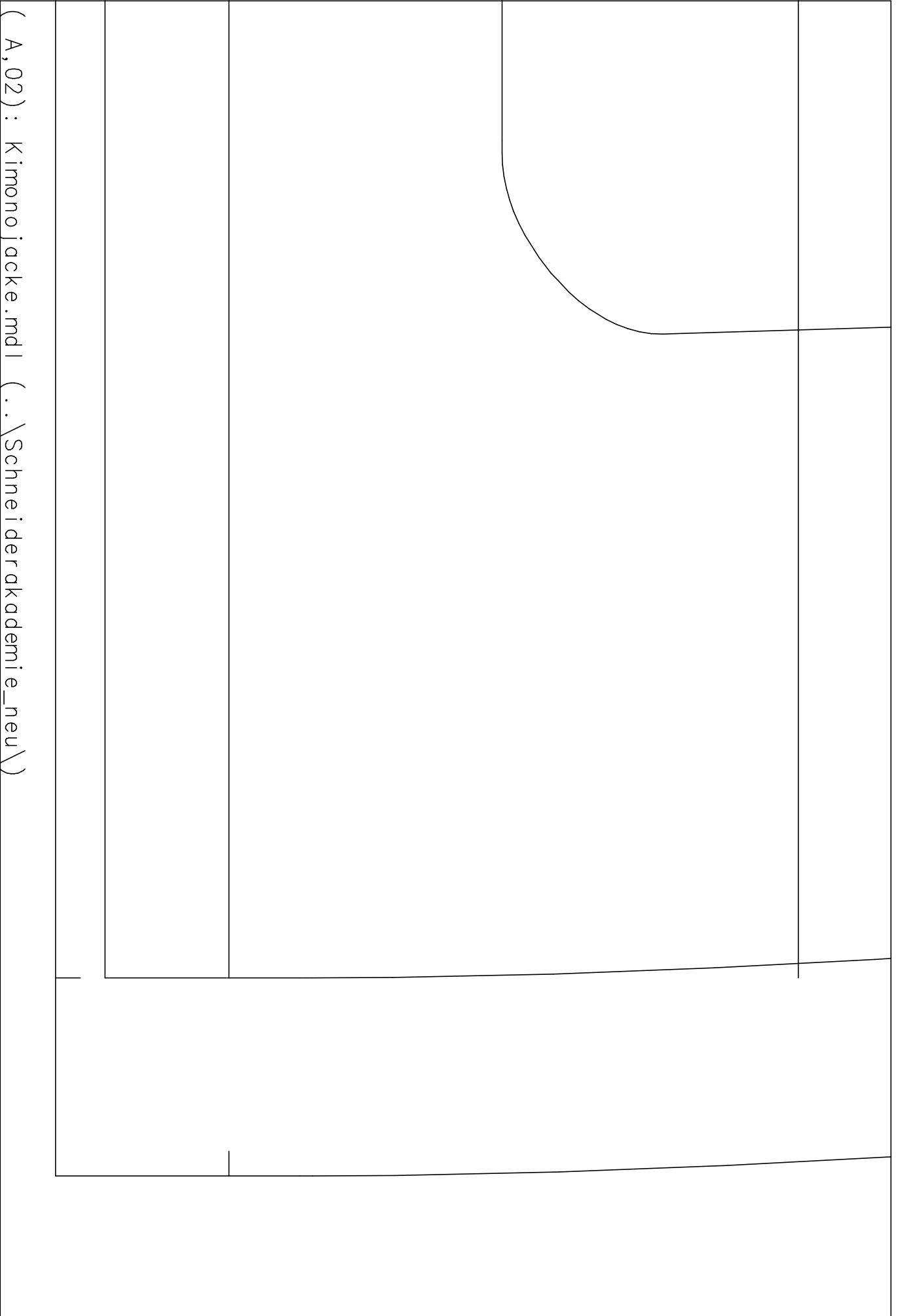
Druckübersicht

Wichtig: Mache zumindest einmal einen Testdruck, damit dein Schnitt perfekt passt. (Die Datei „Testdruck“ mit Anleitung findest Du in den Downloads).





(A,01) : Kimono jacke.mdl (..\Schneiderakademie_neu\)



(A, 02) : Kimono jacke.mdl (.. \Schneiderakademie_neu\)

(A, 03) : Kimono jacke.mdl (.. \Schneiderakademie_neu\)

GR_XS
Schne
Kimono
Ärme
2 x C

(A,04) : Kimonojacke.mdl (..\Schneiderakademie_neu\)

(A, 05) : Kimono jacke.pdf (.. \Schneiderakademie_neu\)

i d e r a k a d e m i e _ n e u
o j a c k e
b e s a t z
b e r s t o f f

B u g

(A, 06) : Kimono jacke.mdl (.. \Schneiderakademie_neu\)



(A, 07) : Kimono jacke.mdl (.. \Schneiderakademie_neu\)

(A, 08) : Kimono jacke.mdl (.. \Schneiderakademie_neu\)

f f o f s r e p o f f
Z x O b e r s t o f f

VB

K i m o n o j a c k e

S c h n e i d e r a k a d e m i e

GR_XS

(B,01) : K i m o n o j a c k e . m d l (. . \ S c h n e i d e r a k a d e m i e _ n e u \)

e

b

O

X

2

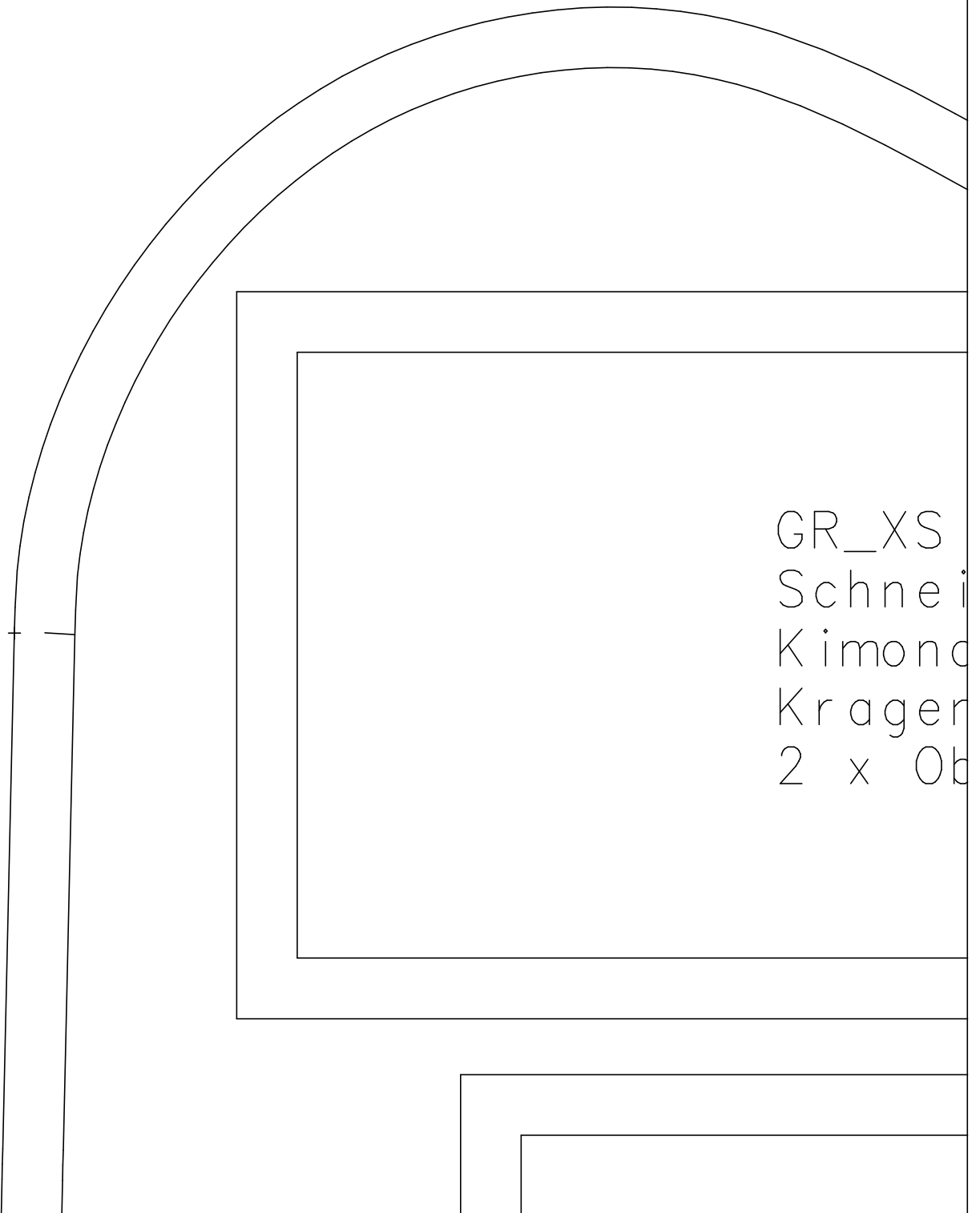
(B,02) : Kimono jacke.mdl (..\Schneiderakademie_neu\)



S t o f f

(B, 03) \ Kimono jacke.mdl (.. \ Schneiderakademie_neu \)

(B, 04) : Kimonojacke.mdl (..\Schneiderakademie_neu\)



GR_XS
Schneid
Kimono
Kragen
2 x Ob

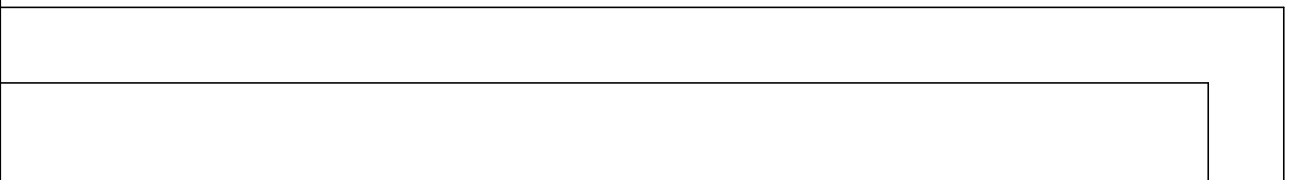
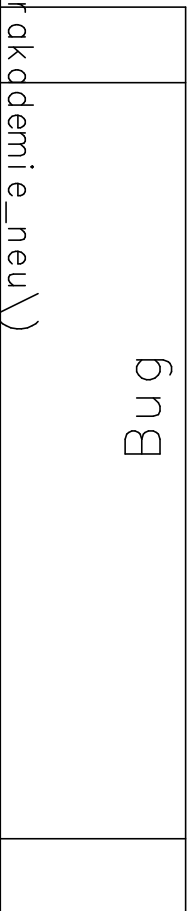
(B,05) : Kimono jacke.mdl
(. \Schneiderakademie_neu\)

der akademie
jacke
erstoff



(B, 06) : Kimonojacke.mdl (.. \Schneiderakademie_neu\)

Bug



(B,07) : Kimonojacke.mdl (..\Schneiderakademie_neu\)

GR_XS

Schneider

Kimonojacke

RT

1 x Oberteil

BOB

(B,08) : Kimonojacke.mdl (..\Schneiderakademie_neu\)

(a k a d e m i e

(k e

(t o f f



(C,01) : Kimono jacke.mdl (..\Schneiderakademie_neu\)

(C, 02) : Kimono jacke.mdl (.. \Schneiderakademie_neu\)

GR_XS

Schneid

Kimono

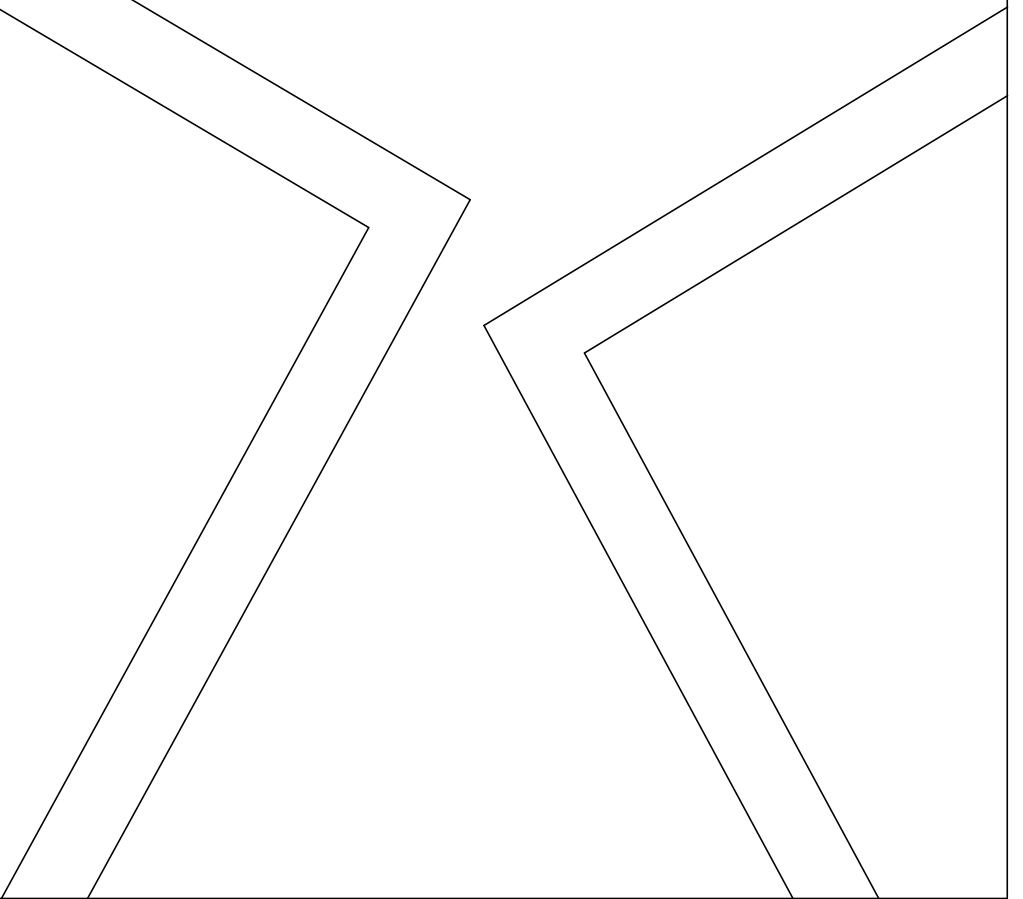
j

(C, 03) : Kimono jacke.mdl (..\Schneiderakademie_neu\)

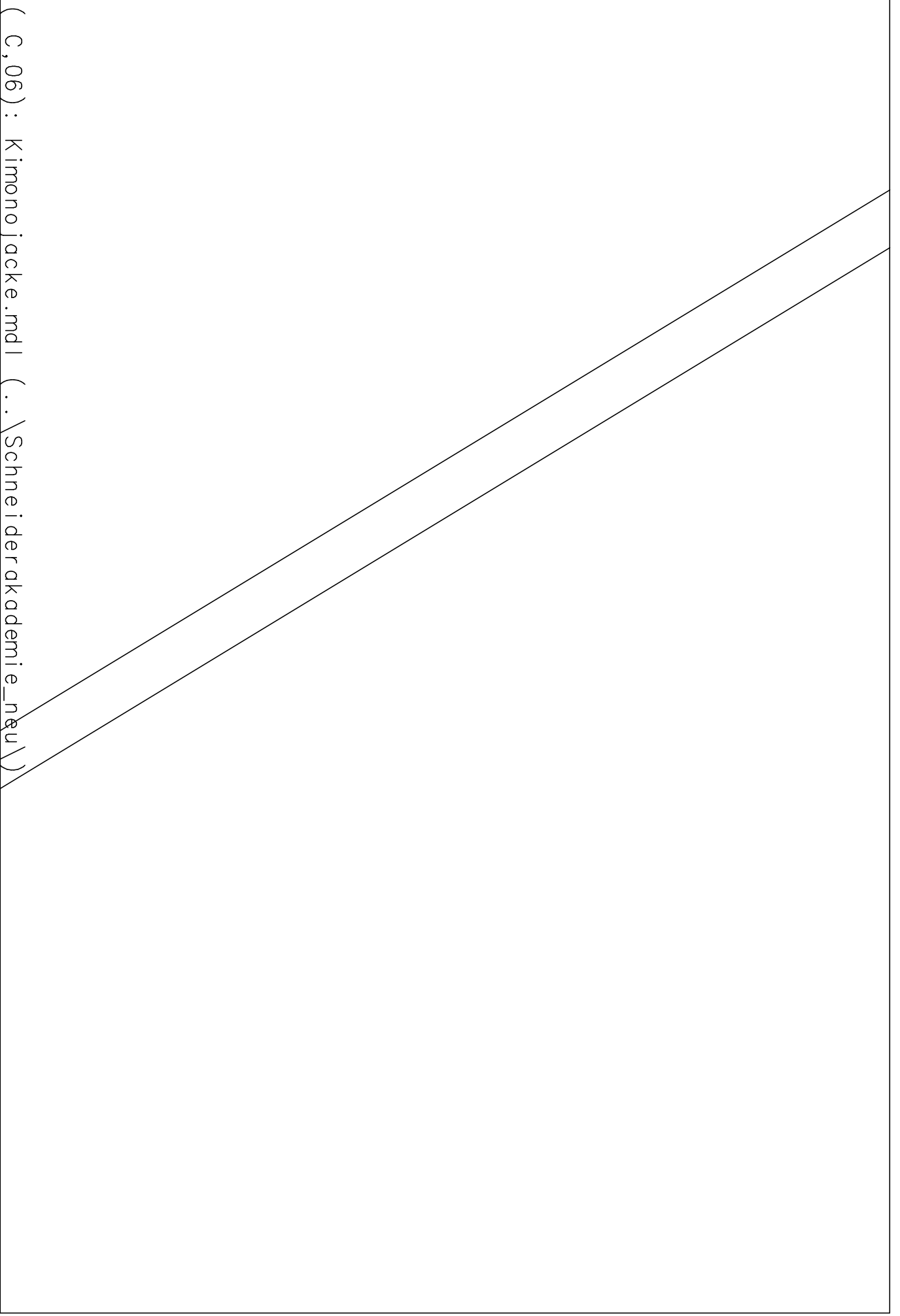
erakademie
acke

(C, 04) : Kimono jacke.mdl (..\Schneiderakademie_neu\)

(C, 05) : Kimono jacke.mdl (.. \Schneiderakademie_neu\)



(C, 06) : Kimono jacke.mdl (.. \Schneiderakademie_neu)

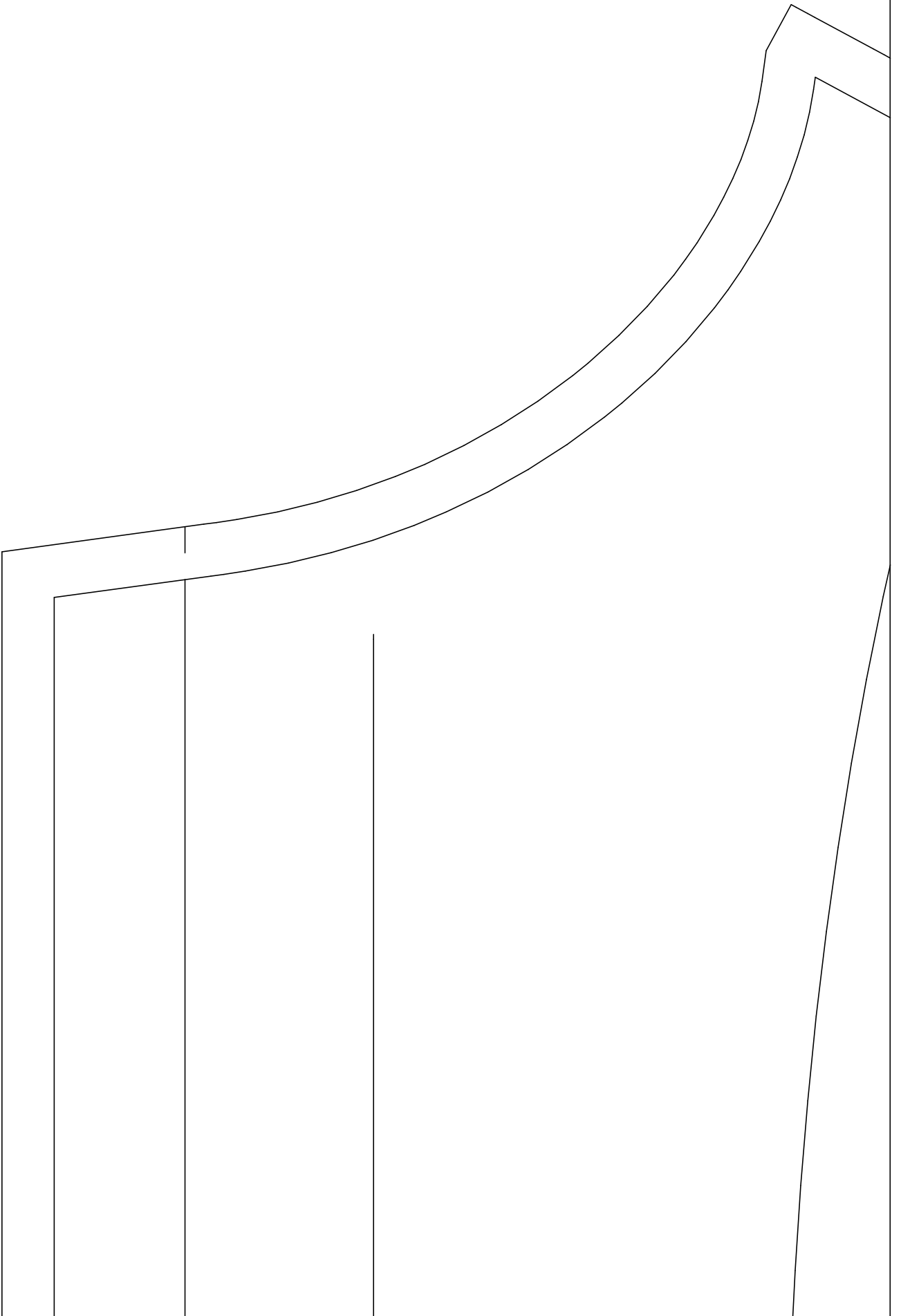


(C, 07) : Kimono Jacke.mdl (.. \Schneiderakademie_neu\)

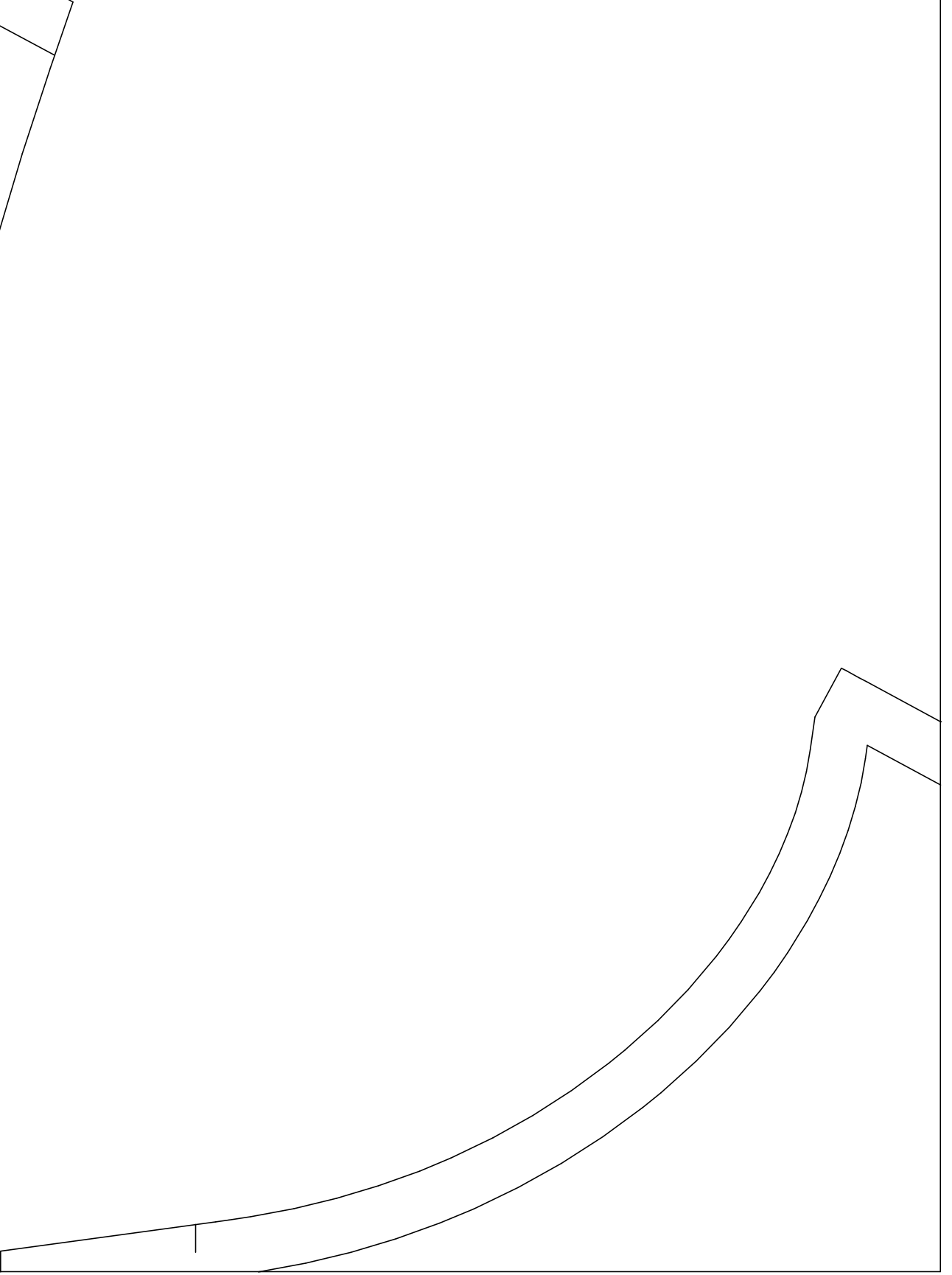


(C,08) : Kimono jacke.mdl (..\Schneiderakademie_neu\)

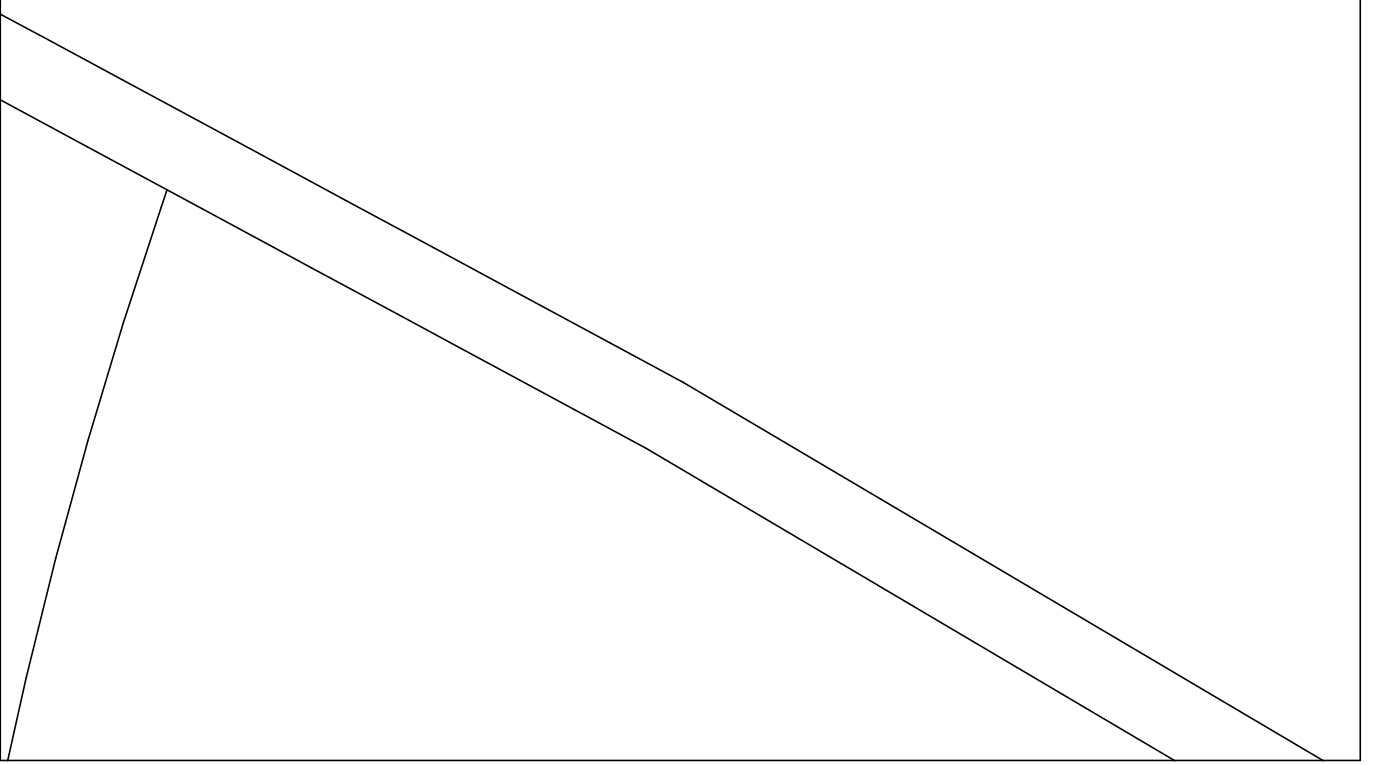
(D,01) : Kimonojacke.mdl (..\Schneiderakademie_neu\)



(D, 02) : Kimono jacke.mdl (.. \Schneiderakademie_neu\)



(D, 03) : Kimono jacke.mdl (.. \Schneiderakademie_neu\)

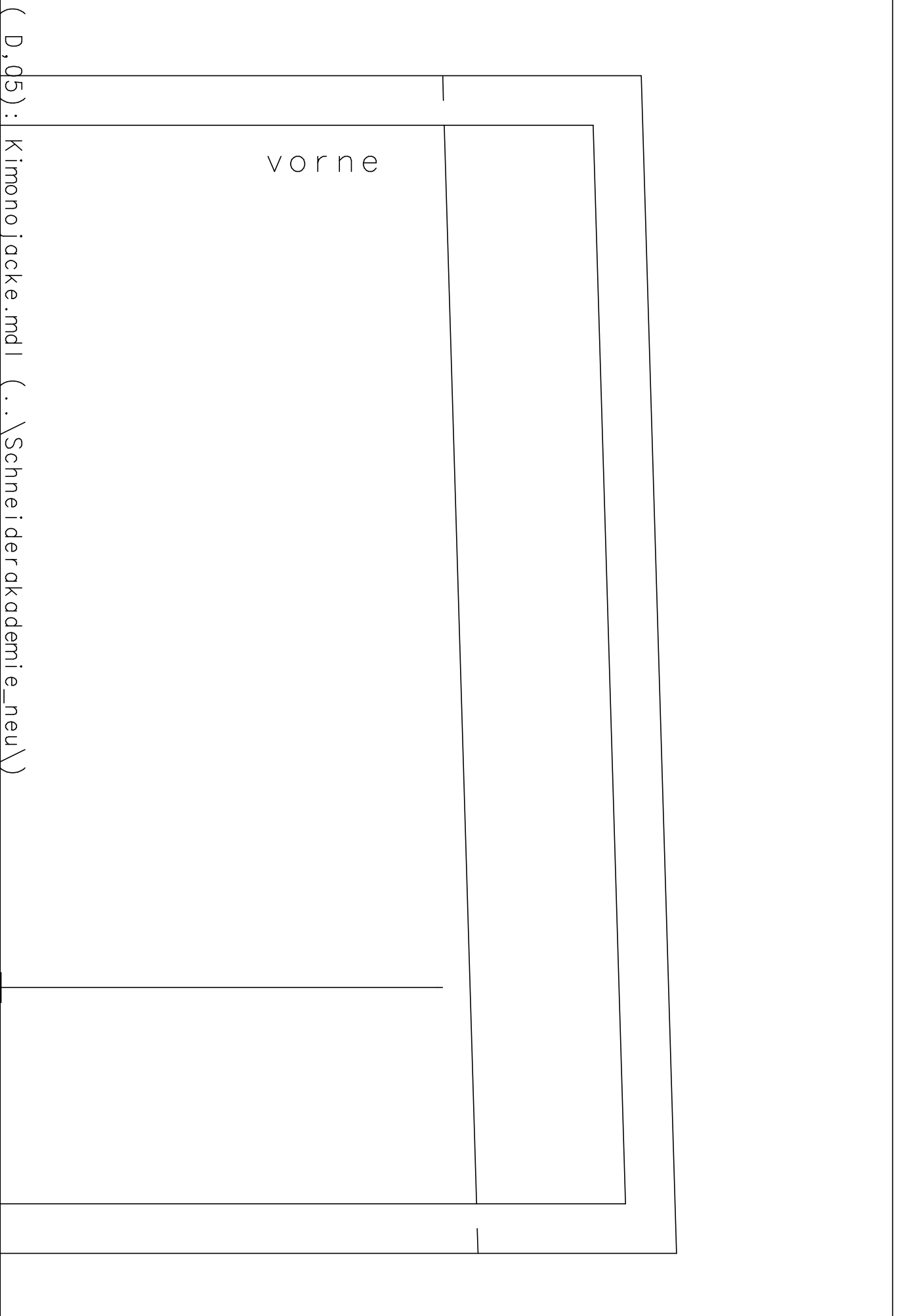


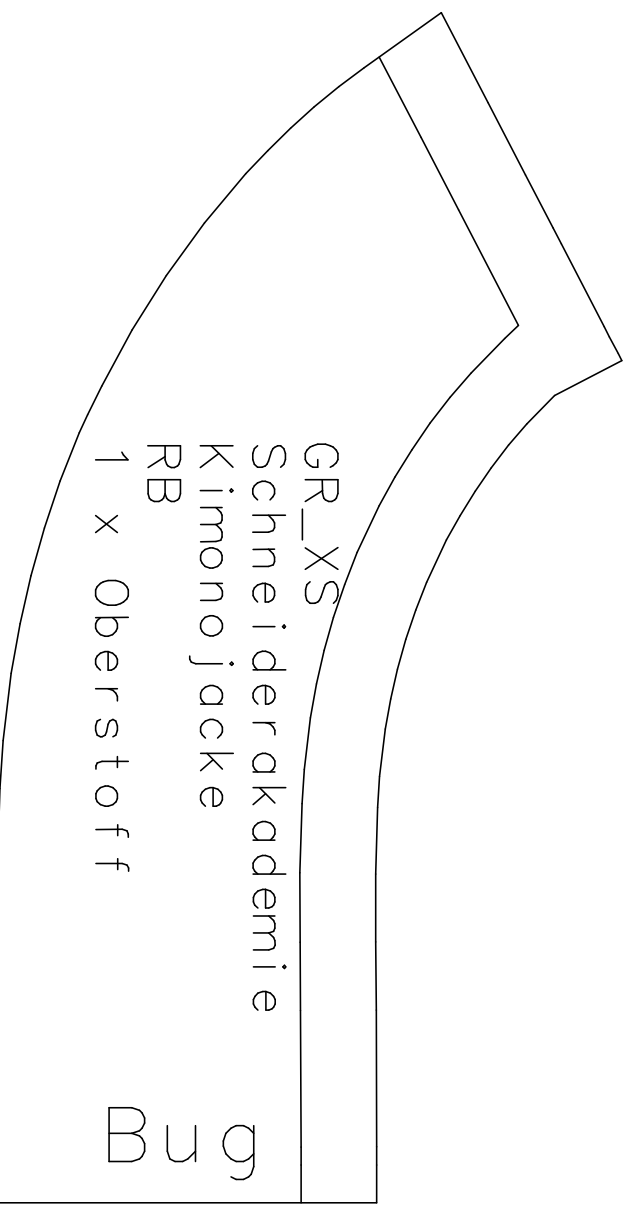
GR_XS
Schneiderakademie
Kimonojacke
Tasche
2 x Oberstoff

(D,04) : Kimonojacke.mdl (..\Schneiderakademie_neu\)

(D, 05) : Kimonojacke.mdl (.. \Schneiderakademie_neu\)

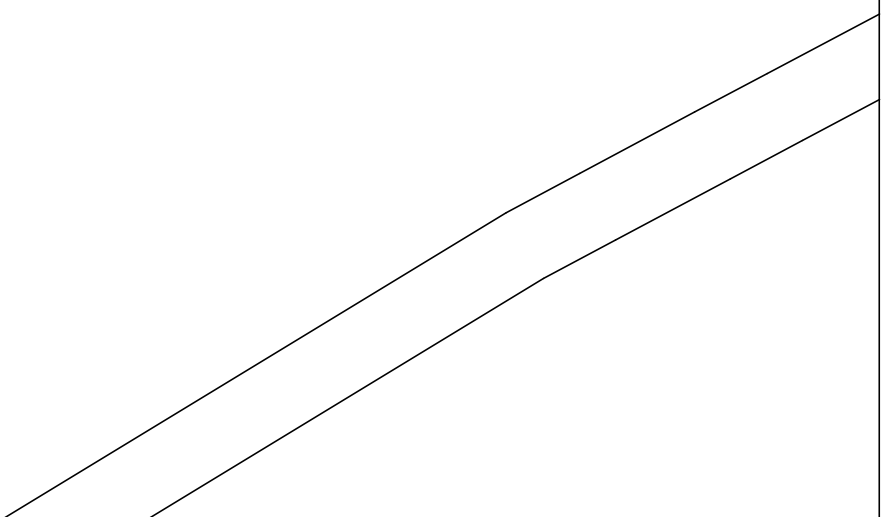
vor ne





(D,06) : Kimonojacke.mdl (..\Schneiderakademie_neu\)

(D, 07) : Kimono jacke.mdl (.. \Schneiderakademie_neu\)



Testquadrat
10cm x 10cm

(D,08) : Kimonojacke.mdl (..\Schneiderakademie_neu\)

