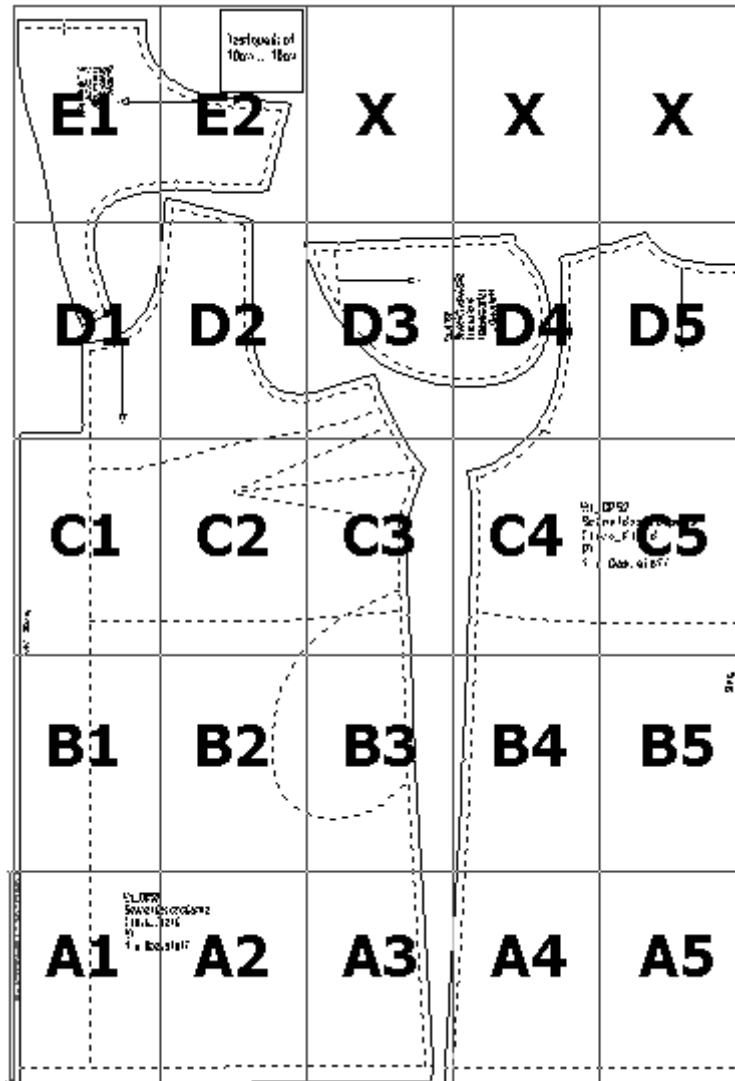


Druckübersicht

Wichtig: Mache zumindest einmal einen Testdruck, damit dein Schnitt perfekt passt. (Die Datei „Testdruck“ mit Anleitung findest Du in den Downloads).



WI_GR50
Schneid
Flora_k
VT
1 x Ob

(A,01): Flora_Kleid.mdl (..\Schneiderakademie_neu\)

(A,02): ~~Flora~~
~~Kleid.mdl~~ (..\Schneiderakademie_neu\

erakademie
leid

rsstoff

(A,03): Flora_Kleid.mdl (..\Schneiderakademie_neu\)

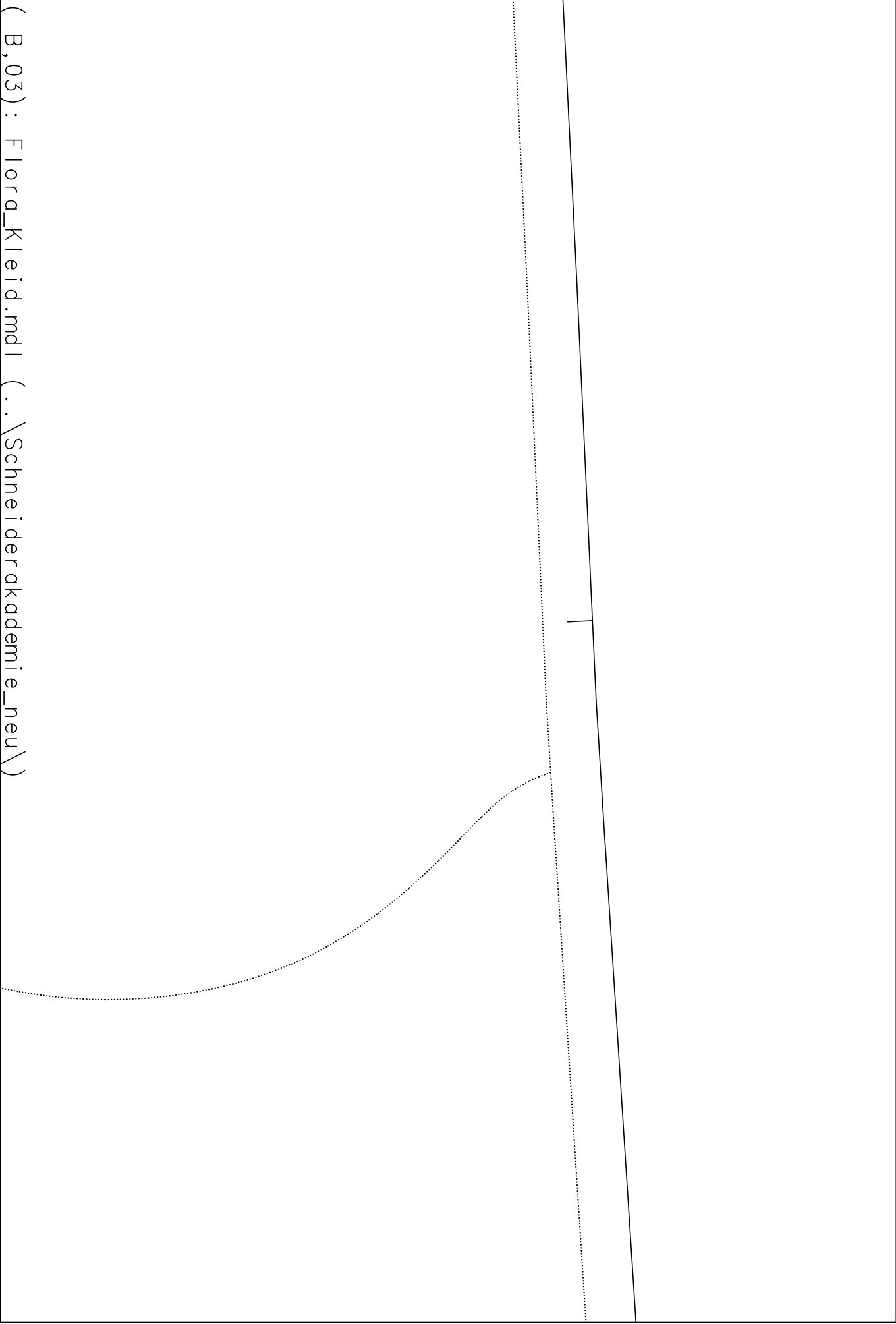
(A,04) : Flora_Kleid.mdl (..\Schneiderakademie_neu\)

(A,05) : Flora_Kleid.mdl (..\Schneiderakademie_neu\)

(B,01): Flora_Kleid.mdl (..\Schneiderakademie_neu\)

(B,02): Flora_Kleid.mdl (..\Schneiderakademie_neu\)

(B,03) : Flora_Kleid.mdl (..\Schneiderakademie_neu\)



(B,04) : Flora_Kleid.mdl (..\Schneiderakademie_neu\)

B u g

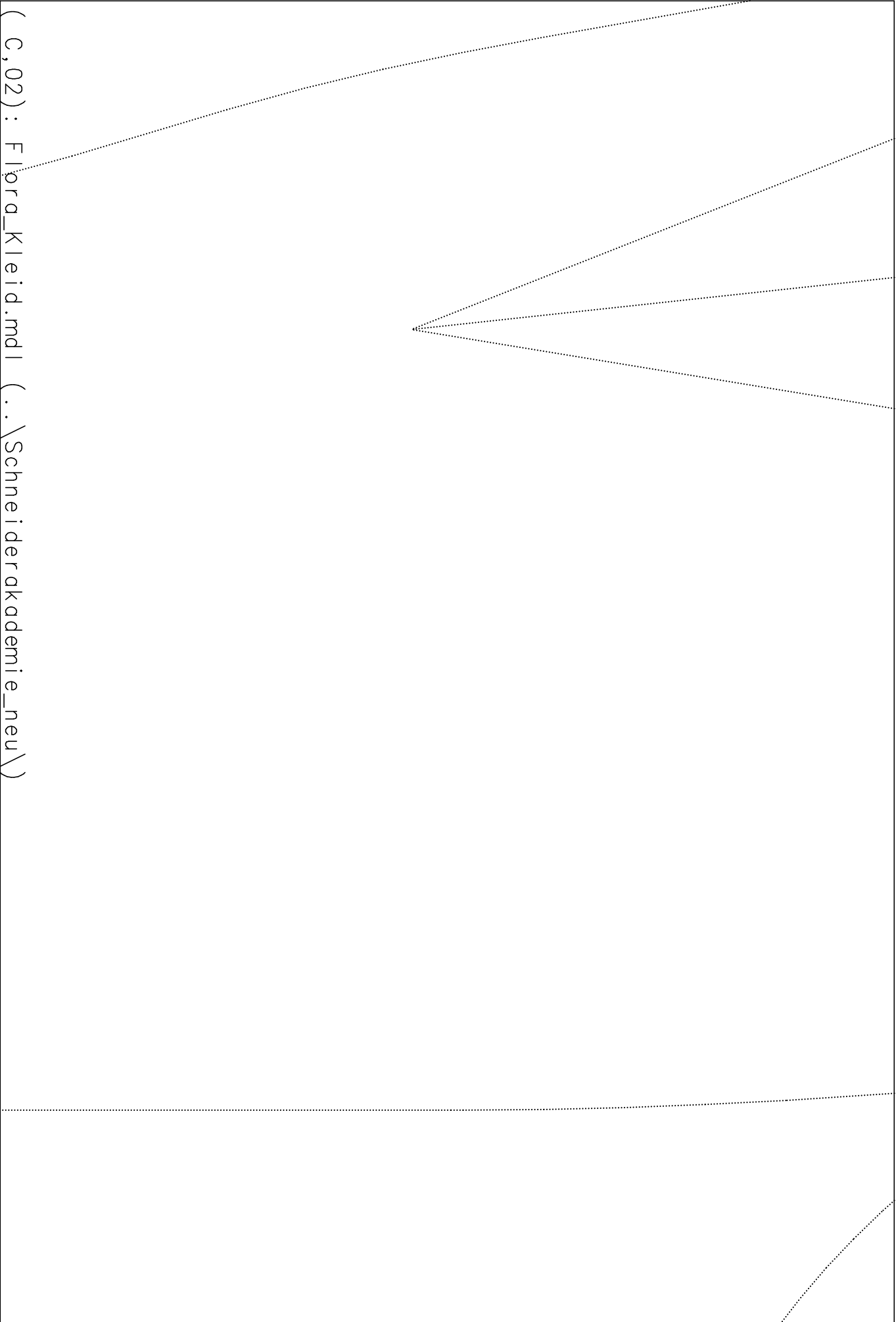
(B,05) : F l o r a _ K l e i d . m d l (.. \ S c h n e i d e r a k a d e m i e _ n e u \)

g n B W

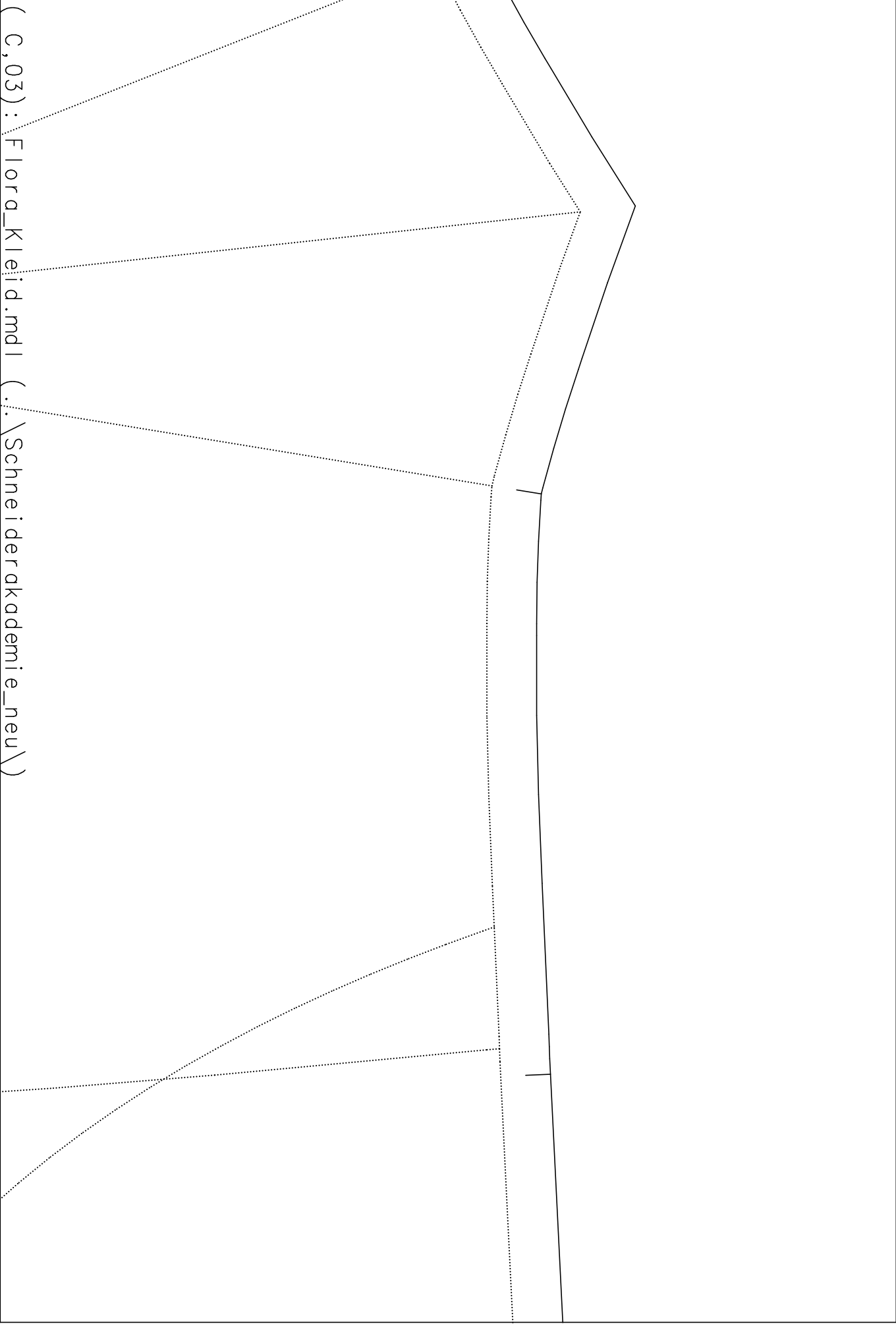
⊖

(C,01): Flora_Kleid.mdl (..\Schneiderakademie_neu\)

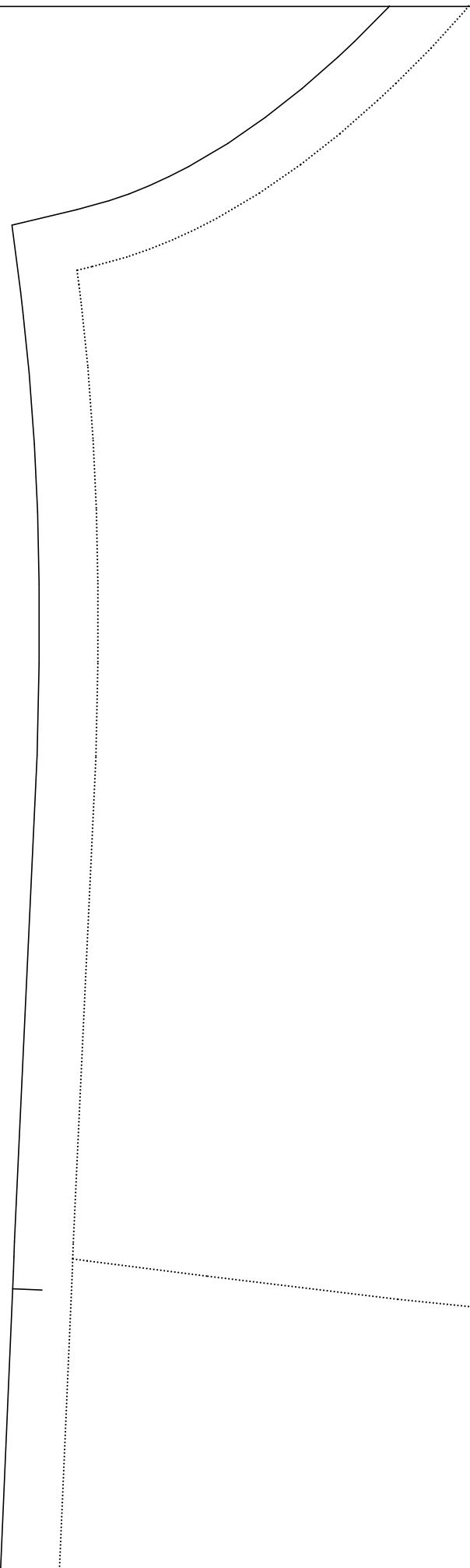
(C,02) : Flora_Kleid.mdl (..\Schneiderakademie_neu\)



(C,03) : Flora_Kleid.mdl (..\Schneiderakademie_neu\)



WI Sc FI RT 1



(C,04) : Flora_Kleid.mdl (..\Schneiderakademie_neu\)

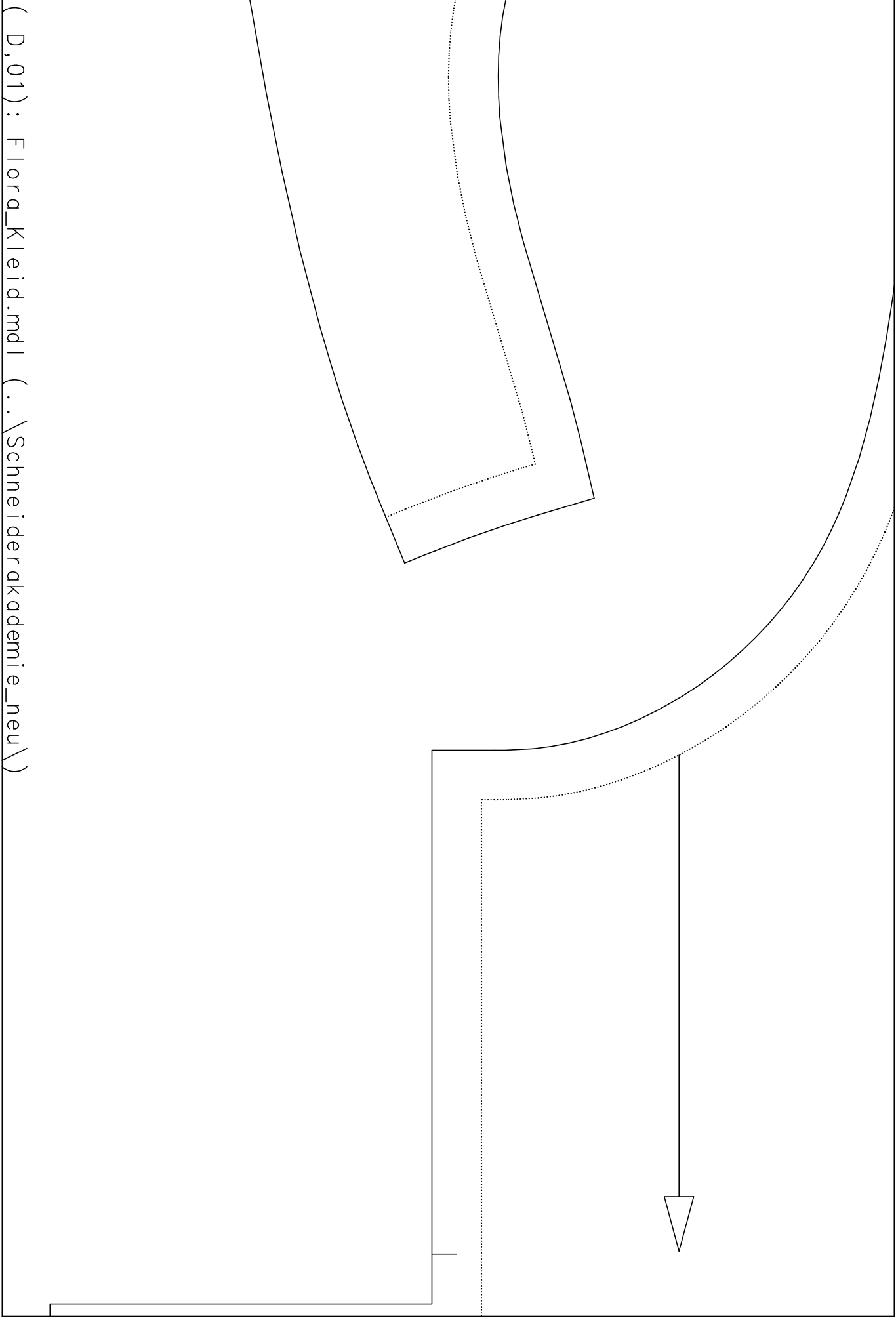
(C,05) : Flora_Kleid.mdl (..\Schneiderakademie_neu\X

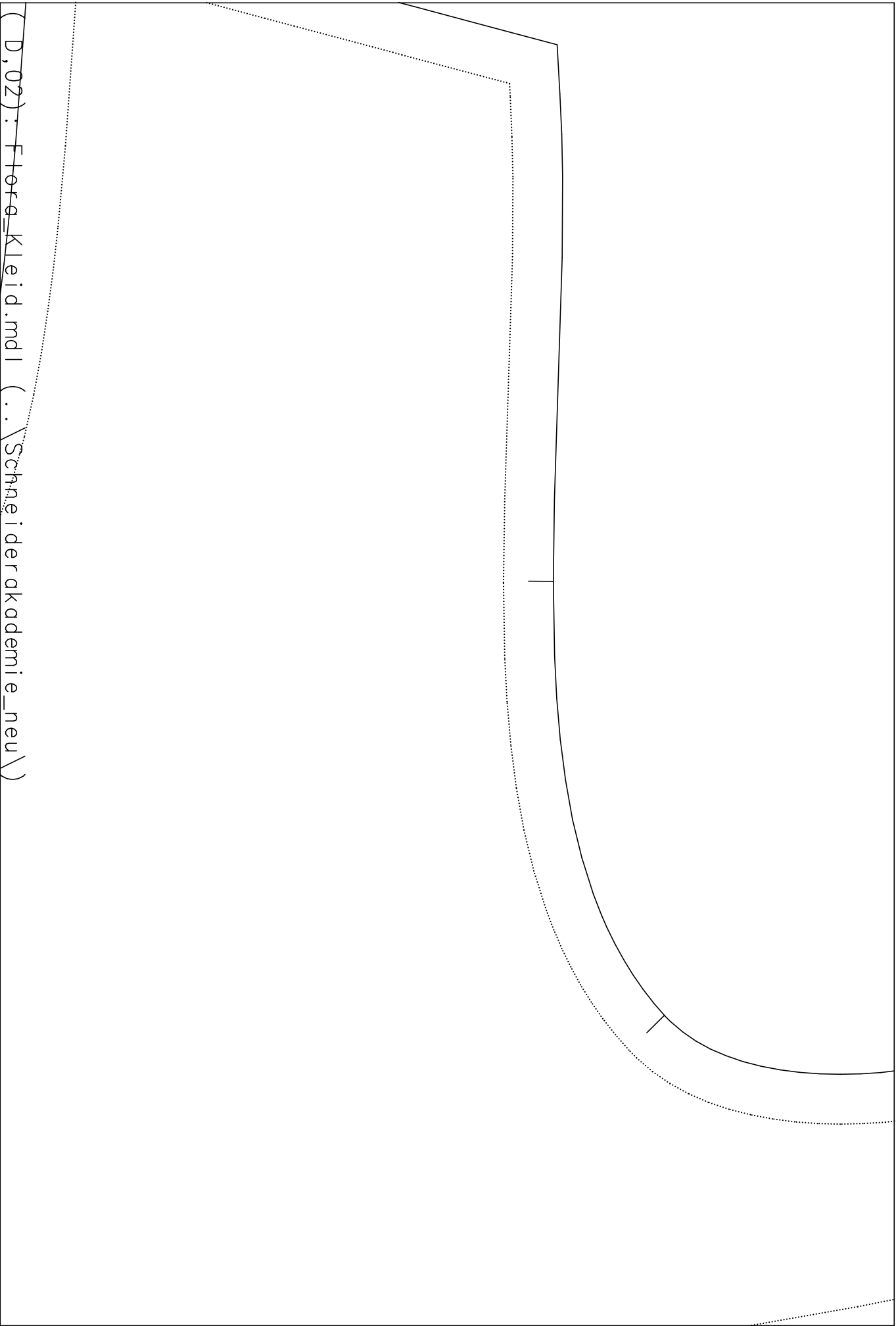
GR50

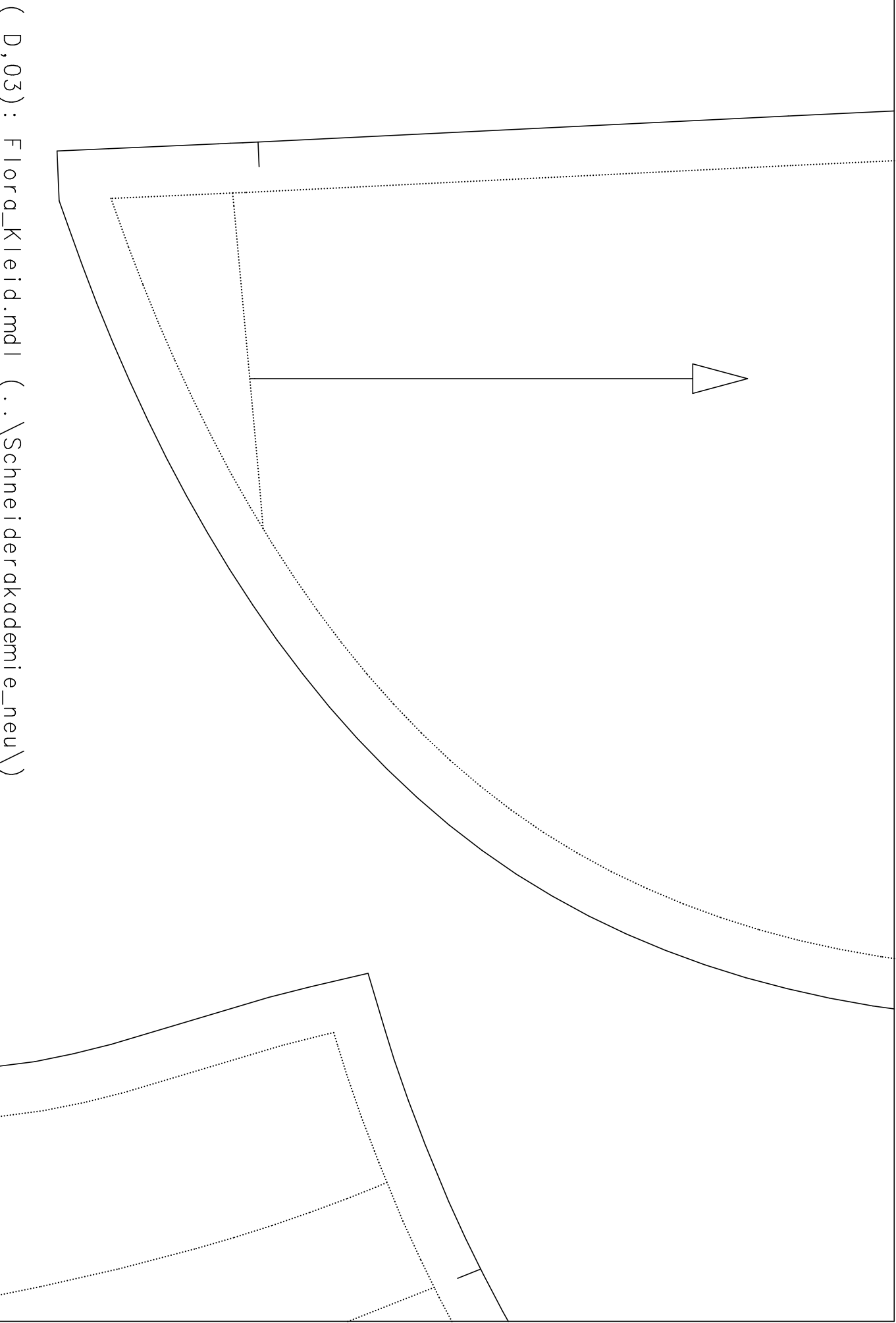
neiderakademie

ra_Kleid

Oberstoff

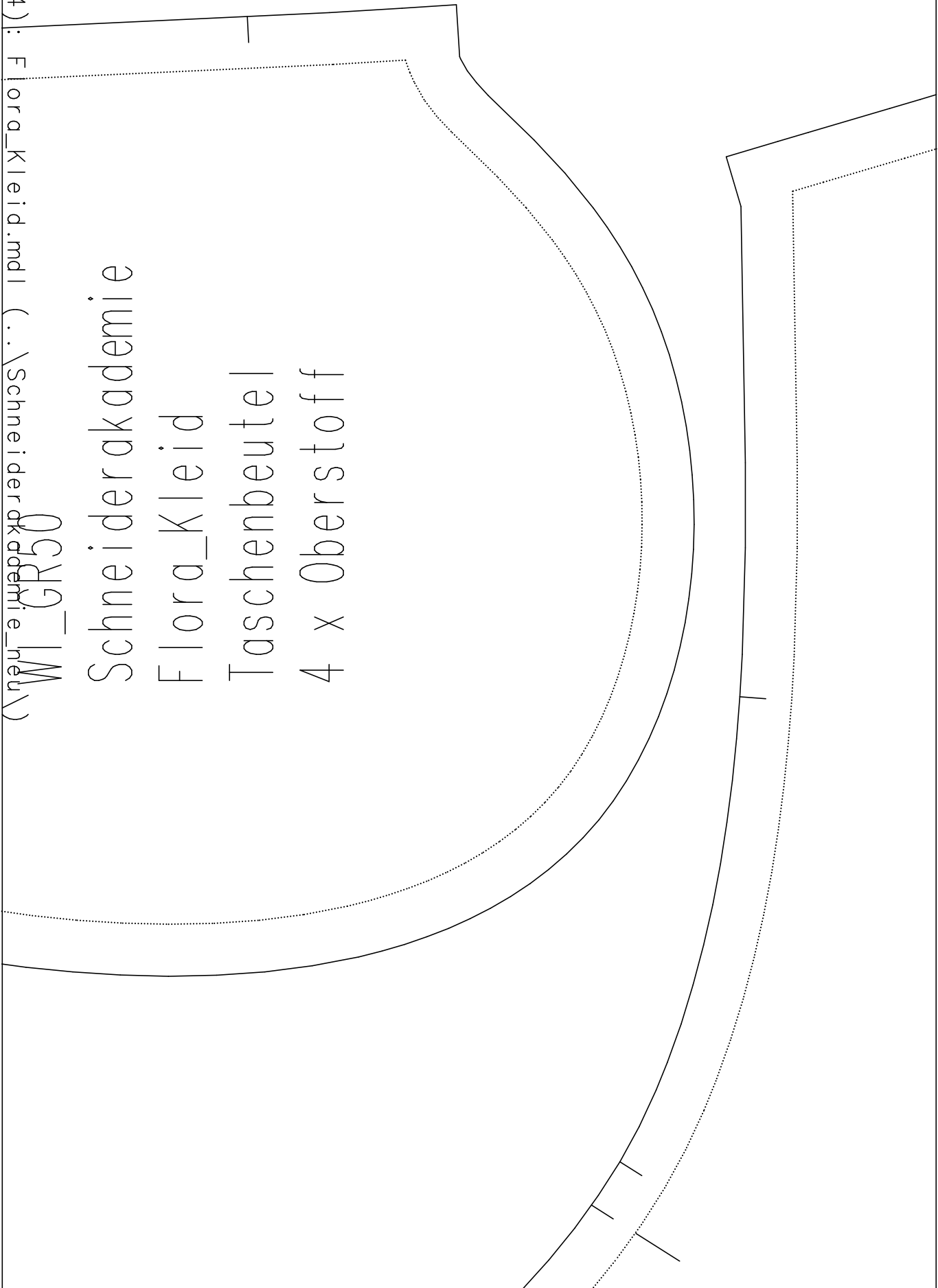




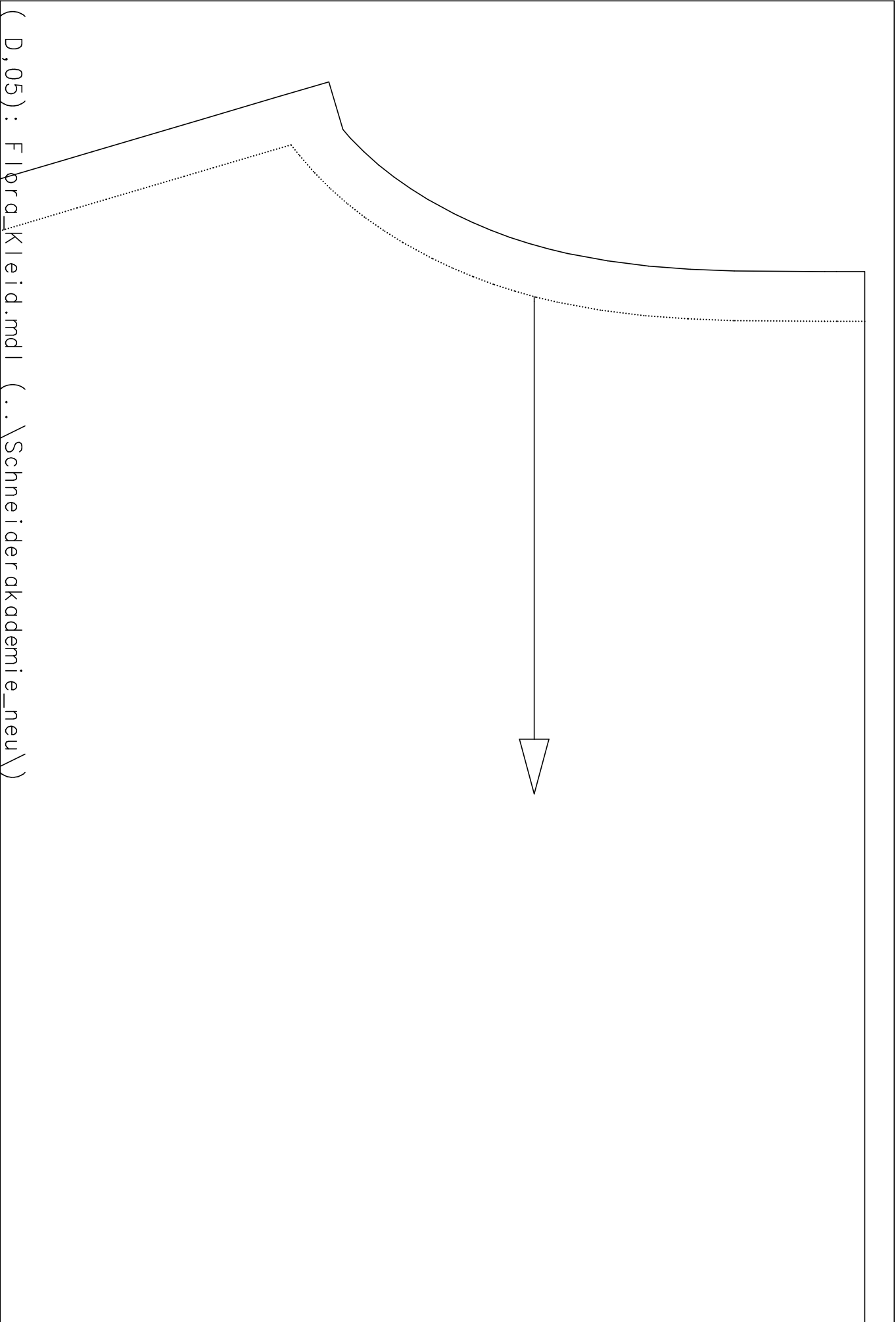


(D,04): Flora_Kleid.mdl (..\Schneiderakademie_neu\09GR1M

Schneiderakademie
Flora_Kleid
Taschenbeutel
4 x Oberstoff



(D,05) : Flpra_Kleid.mdl (..\Schneiderakademie_neu\)





W1_GR50
Schneiderakademie
Flora_Kleid
VT Besatz
2 x Oberstoff

(E,01): Flora_Kleid.mdl (..\Schneiderakademie_neu\)

Testquadrat
10cm x 10cm

(E,02): Flora_Kleid.mdl (... \Schneiderakademie_neu \)

